



# InCommon & CILogon: Federated Identities Supporting Science

Jim Basney  
[jbasney@ncsa.illinois.edu](mailto:jbasney@ncsa.illinois.edu)



National Center for Supercomputing Applications  
University of Illinois at Urbana-Champaign



[About](#)

[Participants](#)

[Join InCommon](#)

Search

- [Home](#)
- [Federation](#)
- [Certificates](#)
- [Assurance](#)
- [Multifactor](#)

## Current InCommon Participants

Below is a complete list of InCommon Participants. There are also lists available for:

- [Identity and Service Providers](#) deployed in the federation (and other metadata-driven pages)
- [Certificate Service](#) subscribers

The IdP and SP pages include links to more-detailed information on each entity—just go to the IdP or SP list and click on the name of the IdP or SP you are interested in. **InCommon serves almost 6 million end-users through federated identity management.**

Higher Education Participants (366)	Government and Nonprofit Laboratories, Research Centers, and Agencies (28)	Sponsored Partners (144)
<a href="#">A. T. Still University</a> <a href="#">Allegheny College</a> <a href="#">American University</a> <a href="#">Amherst College</a> <a href="#">Arizona State University</a> <a href="#">Arkansas State University</a> <a href="#">Auburn University</a> <a href="#">Augsburg College</a> <a href="#">Azusa Pacific University</a> <a href="#">Ball State University</a> <a href="#">Barry University</a> <a href="#">Bay De Noc Community College</a> <a href="#">Baylor College of Medicine</a> <a href="#">Baylor University</a>	<a href="#">Ames Laboratory</a> <a href="#">Argonne National Laboratory</a> <a href="#">Brookhaven National Laboratory</a> <a href="#">ESnet</a> <a href="#">Fermilab</a> <a href="#">GENI Project Office</a> <a href="#">Idaho National Laboratory</a> <a href="#">Internet2</a> <a href="#">Jefferson Lab</a> <a href="#">Lawrence Berkeley National Laboratory</a> <a href="#">LIGO Scientific Collaboration</a> <a href="#">LTERN (Long Term Ecological Research Network)</a>	<a href="#">Academic Works, Inc.</a> <a href="#">Acatar</a> <a href="#">Accessible Information Management, LLC</a> <a href="#">Advantage Connect Pro Inc.</a> <a href="#">ALEKS Corporation</a> <a href="#">Alexander Street Press</a> <a href="#">American Psychological Association</a> <a href="#">Apple - iTunes U</a> <a href="#">AppointLink Portal Solutions, Inc.</a> <a href="#">ARTstor</a> <a href="#">Association for Computing Machinery</a> <a href="#">AT&amp;T Services</a> <a href="#">AthenaOnline.com</a>



## Research and Scholarship Category

[Share](#) [Tools](#)

Added by [David Walker](#), last edited by [Thomas Scavo](#) on May 16, 2013 ([view change](#))

### Research & Scholarship Category

InCommon is offering an easier method for participants to provide collaborative services for researchers and scholars via their federated identities by reducing the policy interpretation, inter-institutional agreements, and system configuration needed for those services. This method categorizes service providers (SPs) to simplify the configuration of identity providers (IdPs); the result is that researchers can successfully access SP sites without delay and without contacting their local IdP admin. The Research & Scholarship (R&S) Category applies to service providers that support research and scholarly activities such as virtual organizations and campus-based collaboration services. Participating IdPs agree to release a minimal set of attributes to the R&S category with a one-time addition to their default release policies, a simpler and more scalable approach than negotiating such release bilaterally with every service provider.

- [Background](#)
- [Candidate Services](#)
- [Requirements for R&S Service Providers](#)
- [R&S Category Attributes](#)
- [Application for Inclusion in the R&S Category](#)

[Browse a list of all current R&S SPs and IdPs](#)

### Background

A growing number of Service Providers (SPs) supporting collaborative research and scholarship activities are joining InCommon. As is the standard practice in the higher education and research world, collaboration on these sites involves knowing who the collaborators are: name, email, institutional affiliation. Unfortunately, the default Attribute Release Policies in place at most campus Identity Providers (IdPs) do not share any information with these sites without local review of the SP's purpose, governing policy, and operational practices. This approach is simply not scalable to the thousands of campus IdPs and thousands of SPs supporting research and scholarship that we anticipate in the future. It is already a serious problem for the big virtual organizations and research labs; the hoped-for explosion of smaller collaboration sites housed in academic departments will not succeed with federation without a scalable solution.

All InCommon SPs are already bound by a set of practices governing how they manage and use personal attributes. InCommon's Research & Scholarship (R&S) Category defines additional set criteria that are designed to facilitate IdP policy decisions to release a controlled set of low-risk attributes to R&S SPs without local review for each SP. InCommon also provides metadata and technology tools to further facilitate automatic, but controlled, release of attributes to the R&S SPs, as well as aiding user support.

IdPs can simplify the management of their Attribute Release Policies by taking advantage of the R&S Category. With a one-time addition to their default release policies they can specify a set of attributes to release to all SPs that are in the R&S Category. This policy would apply to SPs that are added to the category in the future, without the IDP administrator having to make any changes.

### Candidate Services

Whether an SP operator is commercial or non-commercial is not relevant to eligibility for the R&S Category, nor are any other aspects of how the service is implemented or

InCommon Federation Info: Service Categories

https://incommon.org/federation/info/all-sp-categories.html#SPs

**InCommon**  
FEDERATION

BETA

Federation Info: [About](#) [Organizations](#) [Entities](#)

Federation entities provide services to InCommon participants at their discretion. These lists are provided to help increase partnership and collaboration opportunities among InCommon participants. Our value as a community grows as our connections grow.

## InCommon Service Categories

**IdPs** **SPs**

The following service providers belong to the indicated service category:

Service Provider Name	Service Category
<a href="#">CarmenWiki</a>	research-and-scholarship
<a href="#">CILogon</a>	research-and-scholarship
<a href="#">Collaboration Wiki Spaces at Internet2</a>	research-and-scholarship
<a href="#">FileSender</a>	research-and-scholarship
<a href="#">GENI Experimenter Portal</a>	research-and-scholarship
<a href="#">Indiana CTSI HUB</a>	research-and-scholarship
<a href="#">LIGO CBC Wiki</a>	research-and-scholarship
<a href="#">LIGO Wiki</a>	research-and-scholarship
<a href="#">Narada Metrics</a>	research-and-scholarship
<a href="#">Open Science Data Cloud Console</a>	research-and-scholarship
<a href="#">Penn State WikiSpaces</a>	research-and-scholarship
<a href="#">UW-Milwaukee CGCA Wiki</a>	research-and-scholarship

Service Category	# of SPs	# of IdPs
<a href="#">research-and-scholarship</a>	12	55

# CILogon Service (cilogon.org)

- Provides certificates for access to Globus Online, Open Science Grid, and other *cyberinfrastructure*
- Supports InCommon and OpenID authentication
- More info:  
<http://www.cilogon.org/faq>  
<http://www.cilogon.org/news>  
<http://ca.cilogon.org/>

Welcome To The CILogon Service

## CILogon Service

Show Help

Select An Identity Provider:

- University of Delaware
- University of Hawaii
- University of Illinois at Chicago
- University of Illinois at Urbana-Champaign

Search:

Remember this selection:

**Log On**

By selecting "Log On", you agree to [CILogon's privacy policy](#).

For questions about this site, please see the [FAQs](#) or send email to [help@cilogon.org](mailto:help@cilogon.org).  
Know your responsibilities for using the CILogon Service.  
See [acknowledgements](#) of support for this site.

?



## ILLINOIS LOGIN



You must log in to continue.

Enter your **NetID**:

Enter your **Active Directory (AD) password**:

Login

**Forgot your Active Directory password?**

To change or reset your Active Directory password, go to the [CITES Password Manager](#).

## More Information

### Where to Get Help

Contact the [CITES Help Desk](#) at [consult@illinois.edu](mailto:consult@illinois.edu).

### What is a NetID?

Your NetID serves as your login to many University computing and networking services and also determines your University email address, which is [netid@illinois.edu](mailto:netid@illinois.edu).

For more information, see the [Your Network ID \(NetID\)](#) page.

## Technical Information

Service that has requested authentication:

**Service Provider EntityID:**  
<https://cilogon.org/shibboleth>

This login service uses the following server:

**shibboleth.illinois.edu**

This page's URL should start with <https://> followed by the server listed above.

For most web browsers, the security padlock icon for this page should be closed/locked.

To maximize security, quit your browser when done using this application.

Get Your Certificate

https cilogon.org

# CILogon Service

**Certificate Subject:** /DC=org/DC=cilogon/C=US/O=University of Illinois at Urbana-Champaign/CN=James Basney A534  
**Identity Provider:** University of Illinois at Urbana-Champaign  
**Level of Assurance:** Basic

[Show Help](#)

Password Protect Your New Certificate:

Enter A Password:

Confirm Password:

**Get New Certificate**

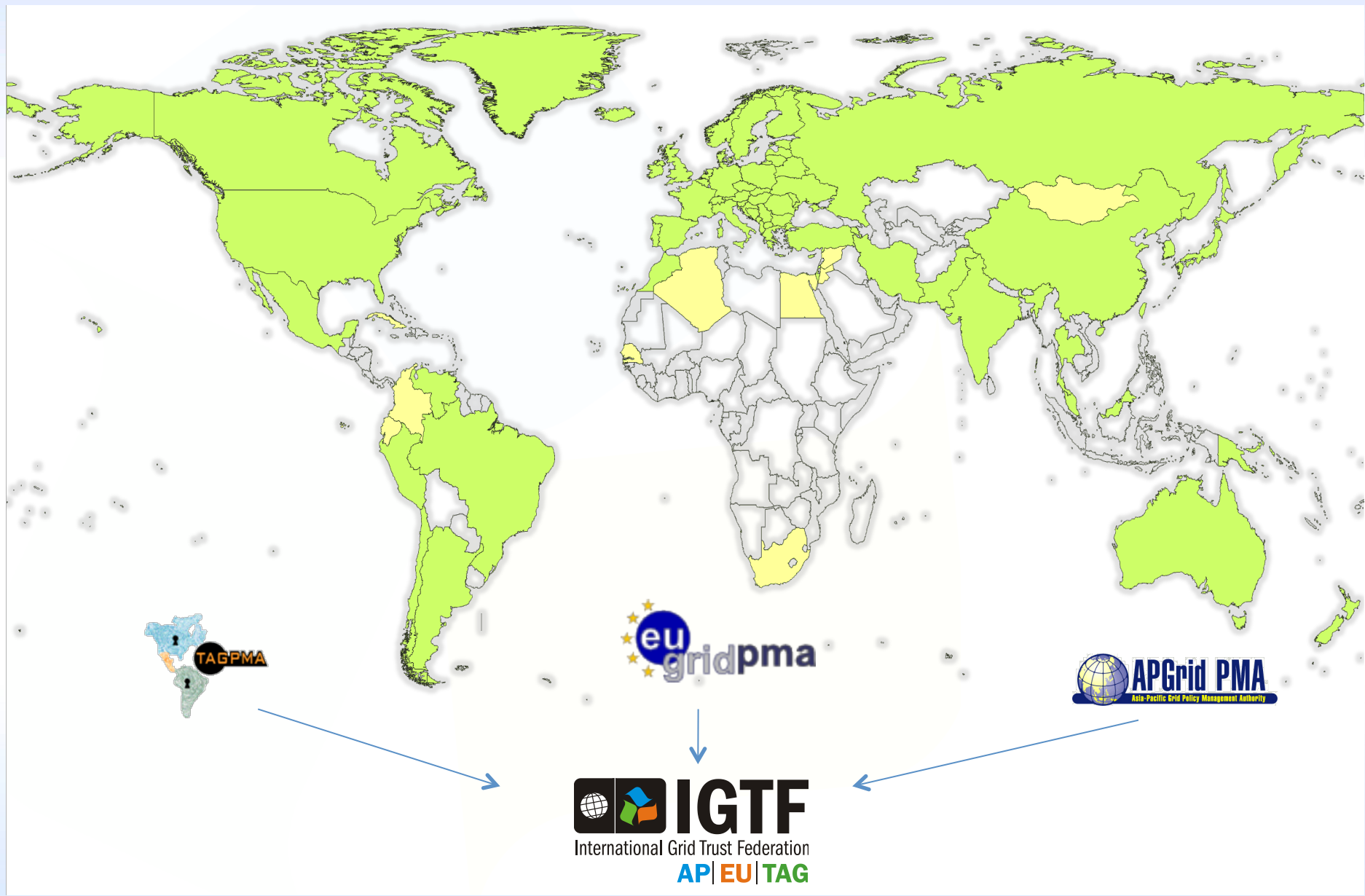
[» Click Here To Download Your Certificate «](#)

Link Expires: 04m:35s

**Log Off**

For questions about this site, please see the [FAQs](#) or send email to help @ cilogon.org.  
Know your responsibilities for using the CILogon Service.  
See acknowledgements of support for this site.

[?](#)





# Sign In

Sign Up with Globus Online

Use Your GlobusOnline login



alternate login

Username   
Password

Sign In

Forgot Password?

Select a different login

GlobusOnline	InCommon / CILogon
ARCS	LRZ
Argonne LCF	NCSA
Argonne MCS & LCRC	NCSA Blue Waters
BIRN	NERSC
CLI Transition	UChicago CI
EGI	UChicago iBi
ESG ANL	UK NGS
Exeter	WestGrid
Google	XSEDE

Support

MANAGE DATA  
start transfer  
view transfer activity  
manage endpoints  
dashboard

case studies  
papers

pro tips  
videos & presentations

Subscribe to Globus News & Updates

Email Address (Required)



## Sign In

Use Your InCommon / CILogon login

[alternate login](#)

You will now be redirected to InCommon / CILogon's authentication page.



Support

### MANAGE DATA

- [start transfer](#)
- [view transfer activity](#)
- [manage endpoints](#)
- [dashboard](#)

### OUR USERS

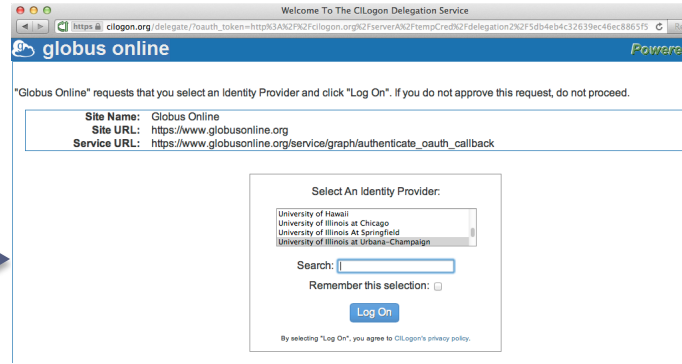
- [user stories](#)
- [user quotes & stats](#)
- [case studies](#)
- [papers](#)

### HOW TO

- [quick start guides](#)
- [tutorials](#)
- [pro tips](#)
- [videos & presentations](#)

### Subscribe to Globus News & Updates

Email Address (Required)



Show Help

"Globus Online" requests that you select an Identity Provider and click "Log On". If you do not approve this request, do not proceed.


**Site Name:** Globus Online  
**Site URL:** https://www.globusonline.org  
**Service URL:** https://www.globusonline.org/service/graph/authenticate\_oauth\_callback

Select An Identity Provider:

- University of Hawaii
- University of Illinois at Chicago
- University of Illinois At Springfield
- University of Illinois at Urbana-Champaign

Search:

Remember this selection:



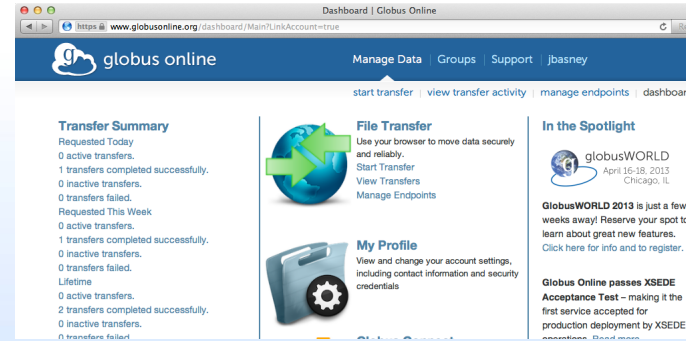
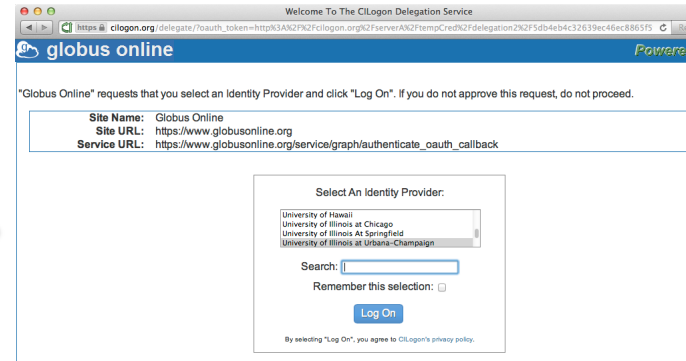
By selecting "Log On", you agree to CILogon's privacy policy.

For questions about this site, please see the [FAQs](#) or send email to [help@cilogon.org](mailto:help@cilogon.org).  
Know [your responsibilities](#) for using the CILogon Service.  
See [acknowledgements](#) of support for this site.





SAML





## ILLINOIS LOGIN



You must log in to continue.

Enter your NetID:

Enter your Active Directory (AD) password:



**Forgot your Active Directory password?**

To change or reset your Active Directory password, go to the [CITES Password Manager](#).

## More Information

### Where to Get Help

Contact the [CITES Help Desk](#) at [consult@illinois.edu](mailto:consult@illinois.edu).

### What is a NetID?

Your NetID serves as your login to many University computing and networking services and also determines your University email address, which is [netid@illinois.edu](mailto:netid@illinois.edu).

For more information, see the [Your Network ID \(NetID\)](#) page.

## Technical Information

Service that has requested authentication:

**Service Provider EntityID:**  
<https://cilogon.org/shibboleth>

This login service uses the following server:

**shibboleth.illinois.edu**

This page's URL should start with <https://> followed by the server listed above.

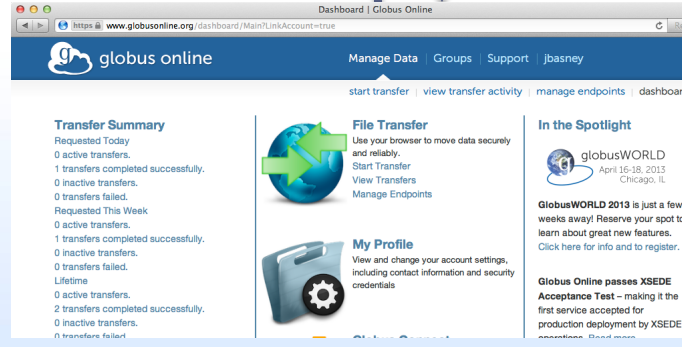
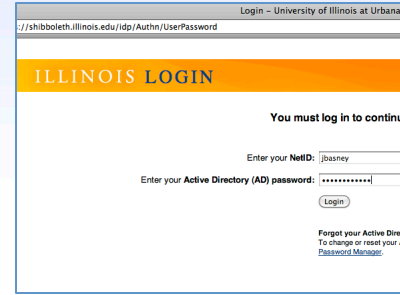
For most web browsers, the security padlock icon for this page should be closed/locked.

To maximize security, quit your browser when done using this application.



SAML

OAuth





### Transfer Summary

Requested Today  
 0 active transfers.  
 1 transfers completed successfully.  
 0 inactive transfers.  
 0 transfers failed.

Requested This Week  
 0 active transfers.  
 1 transfers completed successfully.  
 0 inactive transfers.  
 0 transfers failed.

Lifetime  
 0 active transfers.  
 2 transfers completed successfully.  
 0 inactive transfers.  
 0 transfers failed.



### File Transfer

Use your browser to move data securely and reliably.  
[Start Transfer](#)  
[View Transfers](#)  
[Manage Endpoints](#)



### My Profile

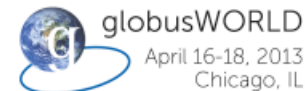
View and change your account settings, including contact information and security credentials



### Globus Connect

Use Globus Connect to transfer files between your computer and any Globus Online endpoint.

### In the Spotlight



**GlobusWORLD 2013** is just a few weeks away! Reserve your spot to learn about great new features.  
[Click here for info and to register.](#)

**Globus Online passes XSEDE Acceptance Test** – making it the first service accepted for production deployment by XSEDE operations. [Read more...](#)

**Announcing Sharing:** Our new sharing service makes it simple for researchers to collaborate securely. [Read more...](#)

Support

#### MANAGE DATA

[start transfer](#)  
[view transfer activity](#)  
[manage endpoints](#)  
[dashboard](#)

#### OUR USERS

[user stories](#)  
[user quotes & stats](#)  
[case studies](#)  
[events](#)

#### RESOURCES

[documentation](#)  
[API](#)  
[release notes](#)  
[downloads](#)

Subscribe to Globus News & Updates

Email Address (Required)

# CILogon Integrated with CyberInfrastructure

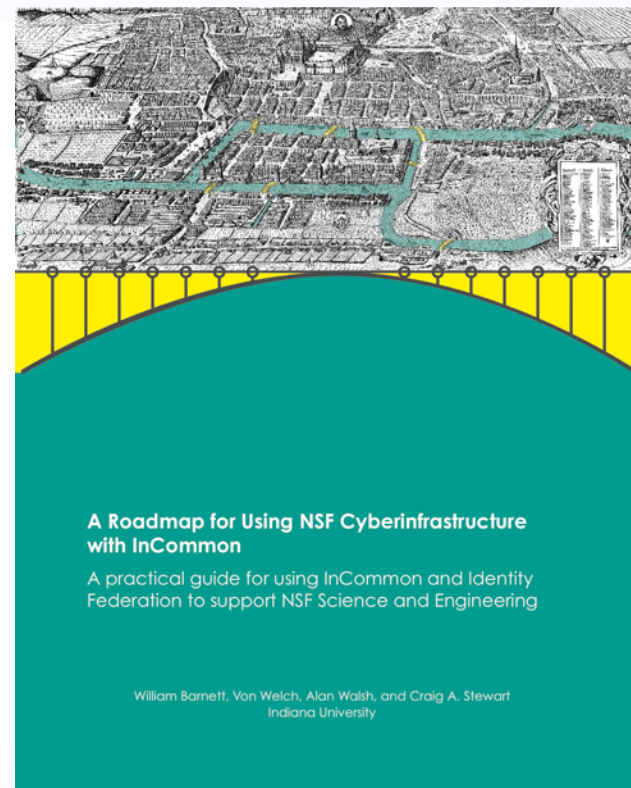
The image displays several overlapping browser windows from the CILogon service. The windows show the following content:

- Top-left window:** Shows the LIGO logo and the text "Welcome To The CILogon Service".
- Top-middle window:** Shows the Open Science Grid logo and the text "Welcome To The CILogon Service".
- Top-right window:** Shows the "Powered By CILogon" logo and the text "Welcome To The CILogon Service".
- Middle-left window:** Shows the DataONE logo and the text "Welcome To The CILogon Service".
- Middle-right window:** Shows the Ocean Observatories Initiative logo and the text "Welcome To The CILogon Service".
- Bottom-left window:** Shows the CardioVascular Research Grid logo and the text "Welcome To The CILogon Service".
- Bottom-middle window:** Shows a "Select An Identity Provider" dialog box with a list of institutions: University of California, Davis; University of California - Office of the President; University of California - San Diego; University of Chicago; University of Cincinnati Main Campus; University of Delaware; University of Hawaii; University of Illinois at Chicago; University of Illinois At Springfield; University of Illinois at Urbana-Champaign. It also includes a search field, a "Remember this selection" checkbox, and "CONTINUE" and "CANCEL" buttons.

At the bottom of the main window, there is a footer with the text: "For questions about this site, please see the FAQs or send email to help @ cilogon.org. Know your responsibilities for using the CILogon Service. See acknowledgements of support for this site." and a question mark icon.

# References

- A Roadmap for Using NSF CyberInfrastructure with InCommon (<http://hdl.handle.net/2022/13024>)
- An Analysis of the Benefits and Risks to LIGO When Participating in Identity Federations (<https://dcc.ligo.org/LIGO-G1100964-v2/public>)
- Federated Security Incident Response (<https://spaces.internet2.edu/x/8o6KAQ>)





# Thanks!

[www.incommon.org](http://www.incommon.org)

[www.cilogon.org](http://www.cilogon.org)

[jbasney@ncsa.illinois.edu](mailto:jbasney@ncsa.illinois.edu)