

CILogon

**Enabling Federated Identity and Access Management for
Scientific Collaborations**

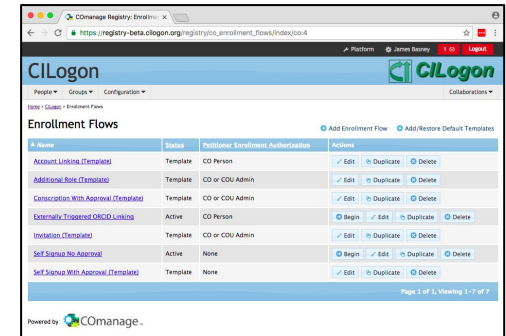
Jim Basney

jbasney@ncsa.illinois.edu



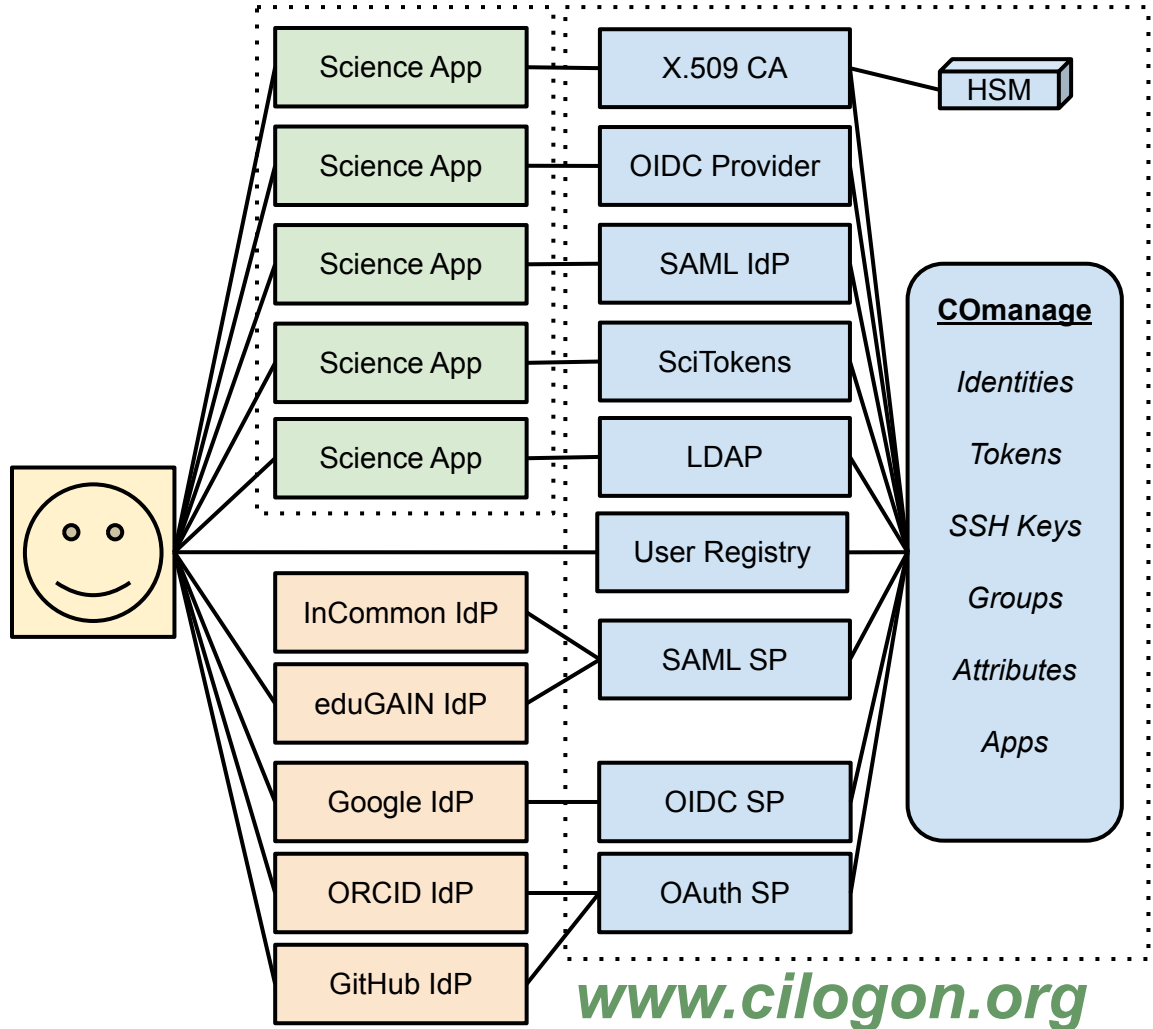
IAM for Research Collaborations

CILogon: 10+ year sustained effort to enable secure logon to scientific cyberinfrastructure (CI) for seamless identity and access management (IAM) using federated identities (SAML, OIDC, OAuth, JWT, X.509, LDAP, SSH, etc.) so researchers log on with their existing credentials from their home organization supporting 20,000+ active users from 500+ organizations around the world with onboarding/offboarding/attributes/groups/roles managed consistently across multiple applications



supporting access to science applications on HPC clusters, in Jupyter notebooks, using Globus, via REST APIs, and many other interfaces

using existing identity providers from the researcher's home organization (SAML/ADFS) or external sources (Google, GitHub, Microsoft, ORCID)



Project Highlight: NSF ACCESS

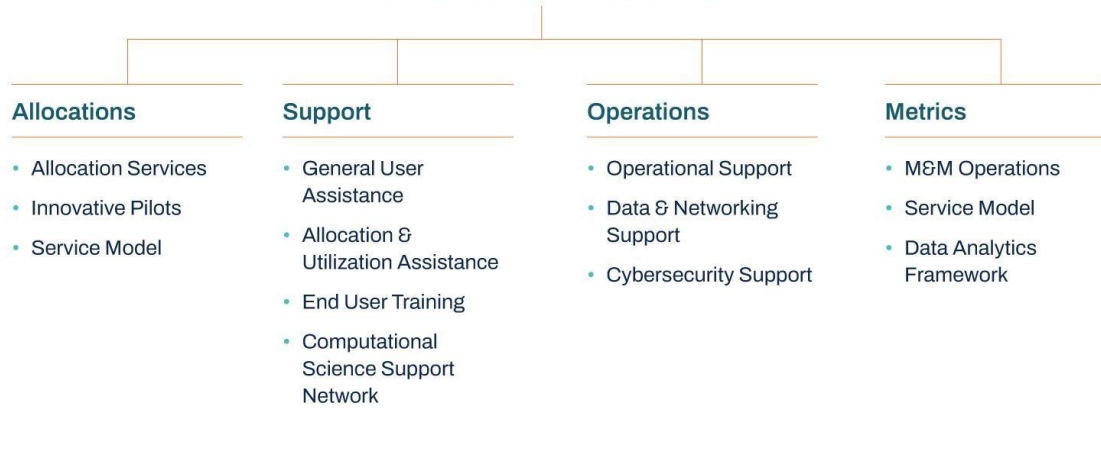
The **Advanced Cyberinfrastructure Coordination Ecosystem: Services and Support** (ACCESS) is a virtual collaboration funded by the National Science Foundation that facilitates free, customized access to advanced digital resources, consulting, training, and mentorship. ACCESS helps the nation's most creative minds discover breakthroughs and solutions for some of the world's greatest scientific challenges.

ACCESS's virtual cyberinfrastructure allows scientists to interactively share computing resources, data, and expertise. ACCESS resources may be broadly categorized as follows: High-Performance Computing, High Throughput Computing, Visualization, Storage, and Data Services. Many resources provide overlapping functionality across categories.

The NSF's ACCESS program builds upon the successes of the 11-year XSEDE project, while also expanding the ecosystem with capabilities for new modes of research and further democratizing participation.

NSF ACCESS Program Overview

ACCESS Services



ACCESS Coordination Office Services



Transition from XSEDE

May 1 2022: ACCESS Project Start

June 24: ACCESS IAM WG Kick-off Meeting

July 1: identity.access-ci.org created

August 1: idp.access-ci.org operational

August 19: registry.access-ci.org operational

September 1 2022: xsede.org redirects to
access-ci.org

100,000 registered users /
5,000 active users

30+ years of usage history

Kerberos passwords

Duo phone registrations

Transition from XSEDE

xsede.org / portal.xsede.org



access-ci.org / allocations.access-ci.org /
support.access-ci.org / operations.access-ci.org /
metrics.access-ci.org / registry.access-ci.org

Three Ways to Access ACCESS

GOT XSEDE?



Use XSEDE
username & password



REGISTER AN ACCOUNT

create
ACCESS Account



Use ACCESS
username & password



Login with
linked account



You can also link accounts later.

COmanage Registry to the Rescue!

Bulk import of 100,000 users

New user enrollment

Email verification

Duplicate detection / merge

Identity linking

Password resets

Username reminders

Profile updates

SSH key management

OIDC client management

New COmanage Plug-ins:

<https://github.com/search?q=org:cilogon+access&type=repositories>

Thanks!

contact:

jbasney@ncsa.illinois.edu